

What is an agent?

An agent uses AI to automate and execute business processes, working alongside or on behalf of a person, team or organization.

Agents vary in levels of complexity and capabilities depending on your need



- Enhance your current experience
- Enable every function and department
- Build new experiences for existing problems
- Optimize your existing business processes
- Build new experiences for new problems
- Unlock new business value

IT Helpdesk agent

How do I connect to the corporate network?

Budget Manager agent

Review outstanding open PO's and begin financial planning

Customer Support agent

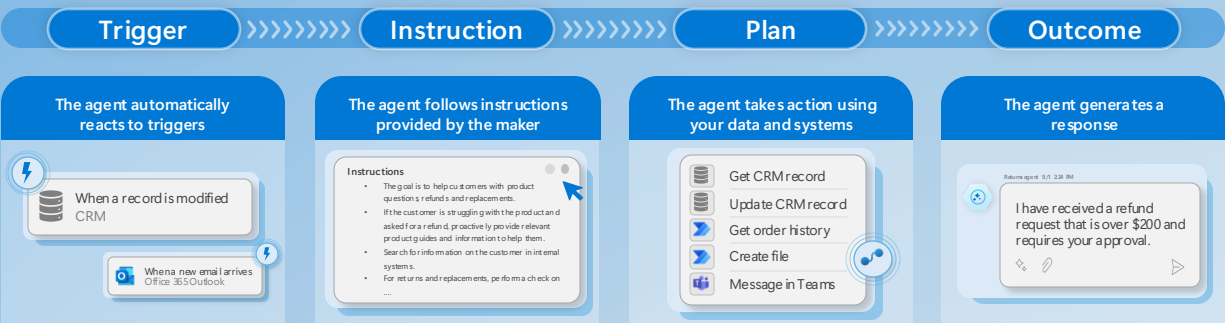
The agent has identified new support issues and triaged to other agents.

HR Agent

Contract Agent

Operations Agent

Solutions for every function and team



Orchestration

Tell your agents when to act

- When an item is created (SharePoint)
- When a new hire starts (HR Management)
- Recurrence Schedule

Design your agents' behavior

- Build the way you want
- Natural language
- Pre-built templates
- Visual canvas
- Code

Connect your agents to knowledge and applications

Your Data

- Data connectors: External systems, SAP
- Microsoft Graph: Productivity data (M365)
- Microsoft Dataverse: Business data
- Microsoft Fabric: Analytics

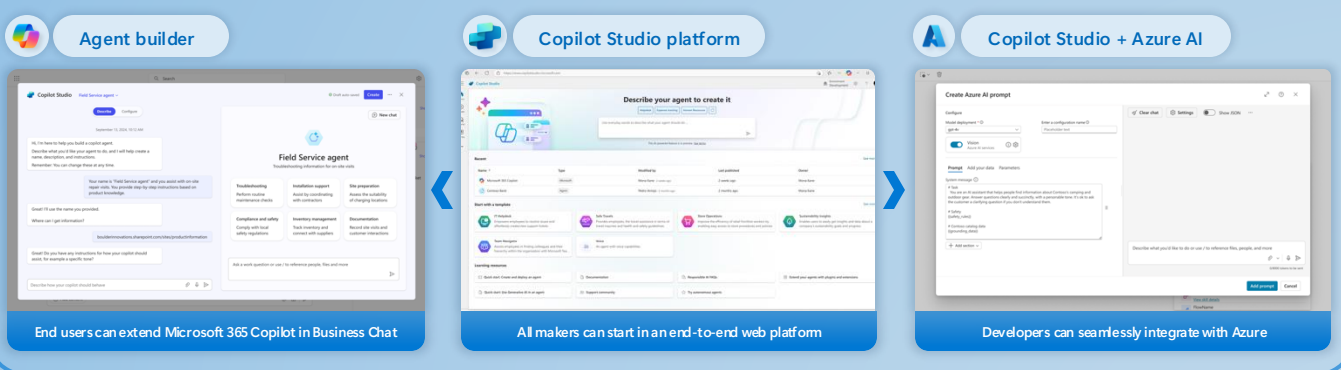
Deploy agents to your channels

Build your own network of agents

A secure, trusted platform

- No infrastructure management
- Granular governance controls
- Enterprise data protection
- Streamlined lifecycle management

Microsoft Copilot Studio



Get started today
aka.ms/copilotstudio



* Access this channel by connecting to an ISV